

TLM

Unclad materials for gaskets, etc.

TLM is a mechanical product line consisting of PTFE coated fiberglass fabrics that are engineered to provide excellent mechanical properties.

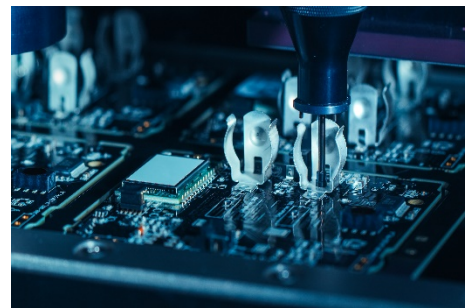
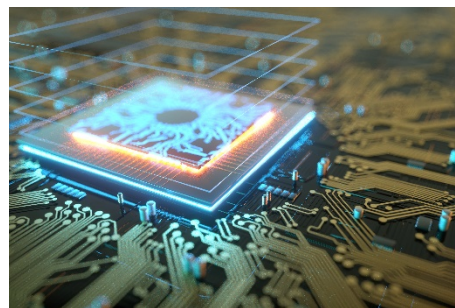
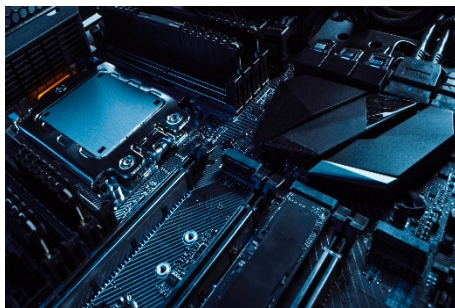
TLM is used primarily for seals and gaskets that are subjected to harsh environments.

Benefits

- Excellent Mechanical Properties
- Ideal for Harsh Environments
- Low Coefficient of Friction
- High Temperature Resistance
- Excellent Chemical and Wear Resistance

Applications

- Laminates for Seals/Gaskets



Asia/Australia
Korea Taconic Company
Republic of Korea
Tel: +82-31-704-1858
sales@taconic.co.kr
www.agc-multimaterial.com

China
AGC Multi Material (Suzhou) Inc.
Suzhou City, China
Tel: +86-512-286-7170
tssales@taconic.co.kr
www.agc-multimaterial.com

Europe/Middle East
AGC Multi Material Europe SA
Lannemezan, France
Tel: +33-05-6298-5290
neltecsales@agc-nelco.com
www.agc-multimaterial.com

North&South America
AGC Nelco America Inc.
Tempe, AZ USA 85281
Tel: +602-679-9196
TaconicPO@agc-nelco.com
www.agc-multimaterial.com

TRF-43 Typical Values				
Property	Unit	Value	Unit	Value
Tensile Strength (MD)	psi	35,600	N/mm ²	245
Tensile Strength (CD)	psi	27,500	N/mm ²	190
Flexural Strength (MD)	psi	28,900	N/mm ²	199
Flexural Strength (CD)	psi	20,600	N/mm ²	142
Elongation at Break (MD)	%	3.94	%	3.94
Elongation at Break (CD)	%	3.92	%	3.92
Young's Modulus (MD)	kpsi	980	N/mm ²	6757
Young's Modulus (CD)	kpsi	1,200	N/mm ²	8274
Poisson's Ratio		0.135		0.135
Surface Resistivity (Elevated Temp.)	Mohm	6.605 x 10 ⁸	Mohm	6.605 x 10 ⁸
Surface Resistivity (Humidity Cond.)	Mohm	3.550 x 10 ⁶	Mohm	3.550 x 10 ⁶
Moisture Absorption	%	0.02	%	0.02
Density	g/cm ³	2.25	g/cm ³	2.25
Flammability		UL 94		UL 94
Max. Operating Temperature	°F	500	°C	260

Remarks : All reported values are typical and should not be used for specification purposes. In all instances, the user shall determine suitability in any given application.

How to Order	
Typical Thicknesses	
Inches	mm
TLM-0140s 14 mil (0.35 mm)	TLM-0140s 14 mil (0.35 mm)
TLM-0200 20 mil (0.508 mm)	TLM-0200 20 mil (0.508 mm)
TLM-0620 62 mil (1.57 mm)	TLM-0620 62 mil (1.57 mm)
TLM-1250 125 mil (3.175 mm)	TLM-1250 125 mil (3.175 mm)

Standard sheet size is 36" x 48" (914 mm x 1220 mm).
Please call customer service for availability of alternate thicknesses and sizes.