

TCM-0020/26-F

Cover Material for Phase Shifter

TacCover TCM-0020/26-F offers more stable PIMD performance, lower dissipation factors and insertion loss properties. These advanced materials also have lower friction coefficient and moisture absorption which leads to better long-term reliability.

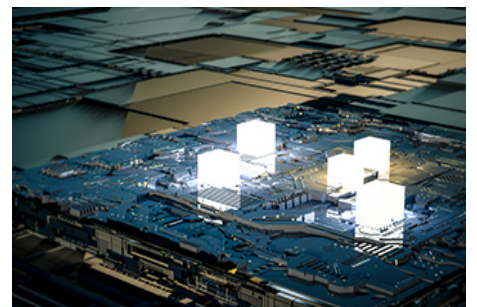
With its exceptionally stable electrical performance, chemical stability and long-term reliability, this advanced material is the best choice for being used in the fabrication of phase shifters in antennas, interconnections and devices.

Benefits

- Lower DF
- Long term reliability
- Lower Friction coefficient
- Tight thickness Control
- Lower Moisture absorption

Applications

- Phase shifter
- Interconnections
- Passive component



Asia/Australia
Korea Taconic Company
Republic of Korea
Tel: +82-31-704-1858
sales@taconic.co.kr
www.agc-multimaterial.com

China
AGC Multi Material (Suzhou) Inc.
Suzhou City, China
Tel: +86-512-286-7170
tssales@taconic.co.kr
www.agc-multimaterial.com

Europe/Middle East
AGC Multi Material Europe SA
Lannemezan, France
Tel: +33-05-6298-5290
neltecsales@agc-nelco.com
www.agc-multimaterial.com

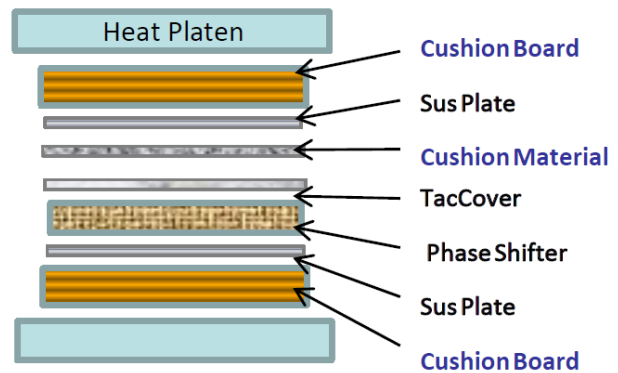
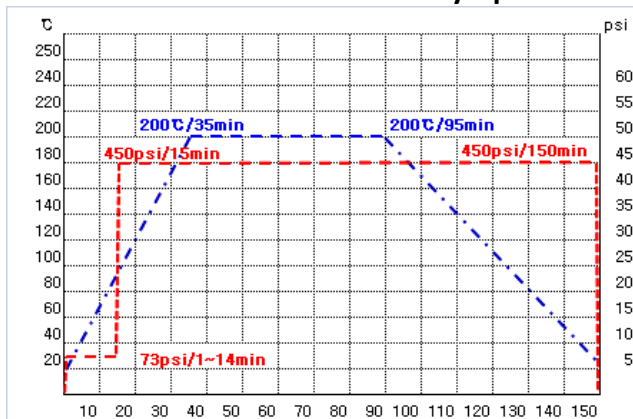
North&South America
AGC Nelco America Inc.
Tempe, AZ USA 85281
Tel: +602-679-9196
TaconicPO@agc-nelco.com
www.agc-multimaterial.com

TacCover TCM-0020/26-F TYPICAL VALUES

Items	Units	Value	Test Methods
Overall Thickness	μm	66	IPC-TM 650 2.2.18
	mil	2.6	
Adhesive Thickness	μm	15	IPC-TM 650 2.2.18.1
	mil	0.6	
Material DK (after)press	-	2.4	IPC-TM 650 2.5.5.5.1 Mod
Material DF (tan δ)	-	0.025	IPC-TM 650 2.5.5.5.1 Mod
Coefficient of friction	-	0.1~0.25	IPC-TM 650 2.5.5.5.1 Mod
Resin Flow	%	1.0	IPC-TM 650 2.3.17.1
Water Absorption	%	0.02%	IPC-TM 650 2.6.2.1

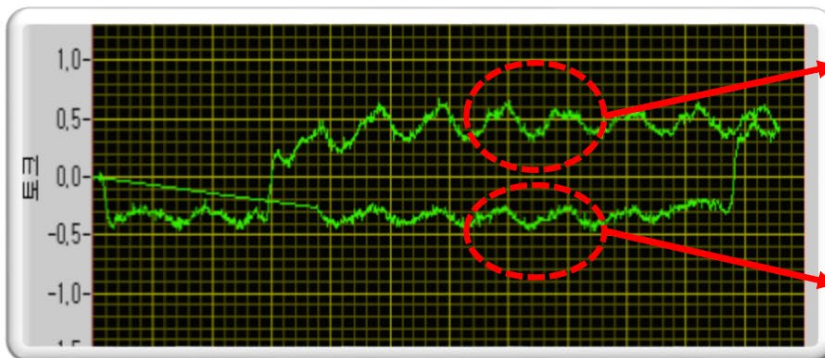
Remark : All reported values are typical and should not be used for specification purposes. In all instances, the user shall determine suitability In any given application.

Recommended lamination and Lay-up



- ※ Followings or equivalents are recommended ;
- ▷ Cushion Board – UKP187g/sqm 13~14sheets
- ▷ Cushion Material – 5~7mil skived film

Lower friction force(torque) and smooth sliding benefits



**PSR/PSR : Big variation in torque
(upper 0.85/bottom -1.0 Kg f)**

**PSR/TacCover : lower & less variation
in torque -> smooth sliding
(upper 0.55/bottom -0.59 Kg f)**