

TCM-0015/21-F

Cover Material for Phase Shifter

TacCover TCM-0015/21-F offers more stable PIMD performance, lower dissipation factors and insertion loss properties. These advanced materials also has lower friction coefficient and moisture absorption which leads better long term reliability.

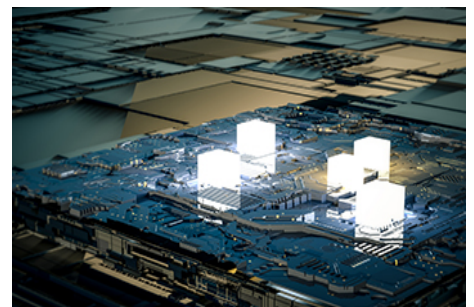
With its exceptionally stable electrical performance, chemical stability and long term reliability, these advanced material is the best choice for being used in the fabrication of phase shifter in antennas, interconnections and devices.

Benefits

- Lower DF
- Long term reliability
- Lower Friction coefficient
- Tight thickness Control
- Lower Moisture absorption

Applications

- Phase shifter
- Interconnections
- Passive component



Asia/Australia
Korea Taconic Company
Republic of Korea
Tel: +82-31-704-1858
sales@taconic.co.kr
www.agc-multimaterial.com

China
AGC Multi Material (Suzhou) Inc.
Suzhou City, China
Tel: +86-512-286-7170
tssales@taconic.co.kr
www.agc-multimaterial.com

Europe/Middle East
AGC Multi Material Europe SA
Lannemezan, France
Tel: +33-05-6298-5290
neltecsales@agc-nelco.com
www.agc-multimaterial.com

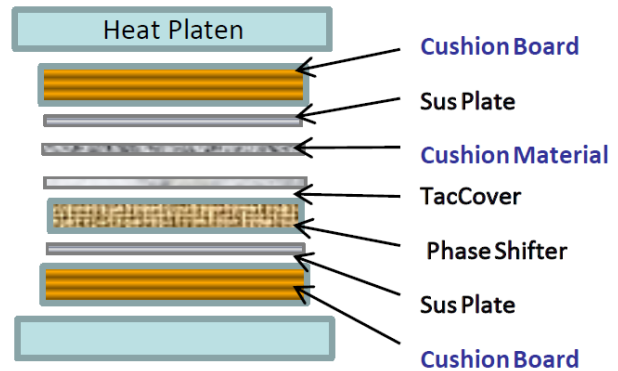
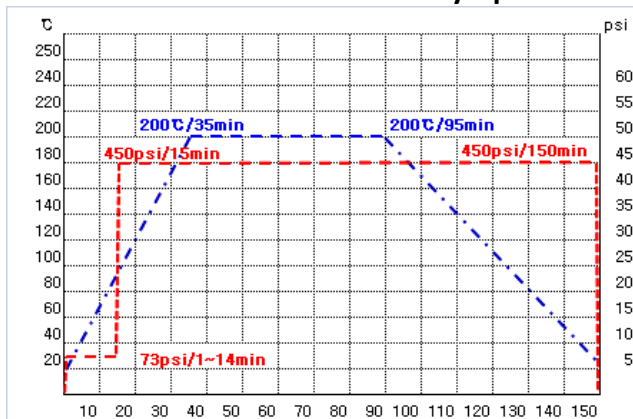
North&South America
AGC Nelco America Inc.
Tempe, AZ USA 85281
Tel: +602-679-9196
TaconicPO@agc-nelco.com
www.agc-multimaterial.com

TacCover TCM-0015/21-F TYPICAL VALUES

| Items | Units | Value | Test Methods |
|--------------------------|-------|----------|--------------------------|
| Overall Thickness | μm | 63 | IPC-TM 650 2.2.18 |
| | mil | 2.5 | |
| Adhesive Thickness | μm | 25 | IPC-TM 650 2.2.18.1 |
| | mil | 1.0 | |
| Material DK (after)press | - | 2.6 | IPC-TM 650 2.5.5.5.1 Mod |
| Material DF (tan δ) | - | 0.003 | IPC-TM 650 2.5.5.5.1 Mod |
| Coefficient of friction | - | 0.1~0.25 | IPC-TM 650 2.5.5.5.1 Mod |
| Resin Flow | % | 4.5 | IPC-TM 650 2.3.17.1 |
| Water Absorption | % | 0.02% | IPC-TM 650 2.6.2.1 |

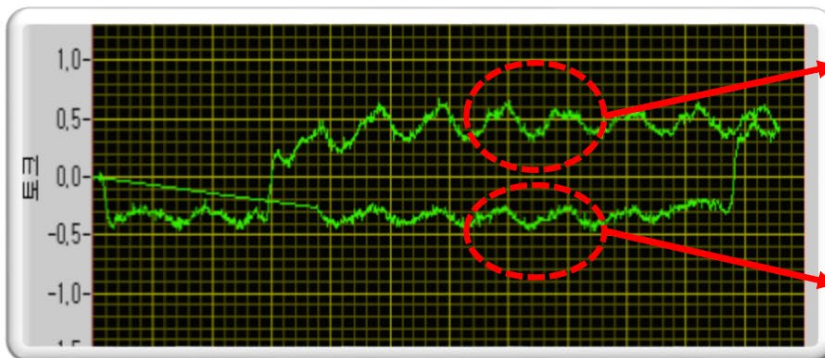
Remark : All reported values are typical and should not be used for specification purposes. In all instances, the user shall determine suitability In any given application.

Recommended lamination and Lay-up



- ※ Followings or equivalents are recommended ;
- ▷ Cushion Board – UKP187g/sqm 13~14sheets
- ▷ Cushion Material – 5~7mil skived film

Lower friction force(torque) and smooth sliding benefits



**PSR/PSR : Big variation in torque
(upper 0.85/bottom -1.0 Kgf)**

**PSR/TacCover : lower & less variation
in torque -> smooth sliding
(upper 0.55/bottom -0.59 Kgf)**